



# HISTORIC ACADEMY THEATRE TECHNICAL SPECIFICATIONS

UPDATED 1.12.2024





THIS PAGE IS LEFT INTENTIONALLY BLANK



## TABLE OF CONTENTS

TECHNICAL AND OPERATIONS STAFF CONTACTS	4
SEATING CAPACITY	5
SEATING CHARTS	6
LOADING DOCK	9
STAGE INFORMATION AND MEASUREMENTS	10
DRAPERY INVENTORY	12
REPERTORY LINE SET SCHEDULE	13
POWER	15
ELECTRICS + LIGHTING/EFFECTS SYSTEM	16
SOUND AND COMMUNICATIONS SYSTEM	18
VIDEO AND PROJECTION SYSTEM	21
SUPPORT SPACES	22
LOCAL FACT SHEET	24



## TECHNICAL AND OPERATIONS STAFF CONTACTS

### CHIEF OPERATIONS OFFICER

Tabitha Abbott

Email: [tabbott@academycenter.org](mailto:tabbott@academycenter.org)

Cell: (434) 221-2878

### PRODUCTION MANAGER

Mike Anderson

Email: [manderson@academycenter.org](mailto:manderson@academycenter.org)

Office: (434) 528-3256 x310

### ASSISTANT PRODUCTION MANAGER - SOUND

Derrick Gunnell

Email: [dgunnell@academycenter.org](mailto:dgunnell@academycenter.org)

Cell: (434) 549-1491

### ASSISTANT PRODUCTION MANAGER - LIGHTING/RIGGING

Alexzandra Gancedo

Email: [agancedo@academycenter.org](mailto:agancedo@academycenter.org)

Cell: (678) 315-2298

Austin Downs

Email: [adowns@academycenter.org](mailto:adowns@academycenter.org)

Cell: (540) 553-2638

### ASSISTANT PRODUCTION MANAGER, HOSPITALITY

Knef Johnson

Email: [kajohnson@academycenter.org](mailto:kajohnson@academycenter.org)

Cell: (540) 875-6988

### BOX OFFICE MANAGER

Guy Mavinga

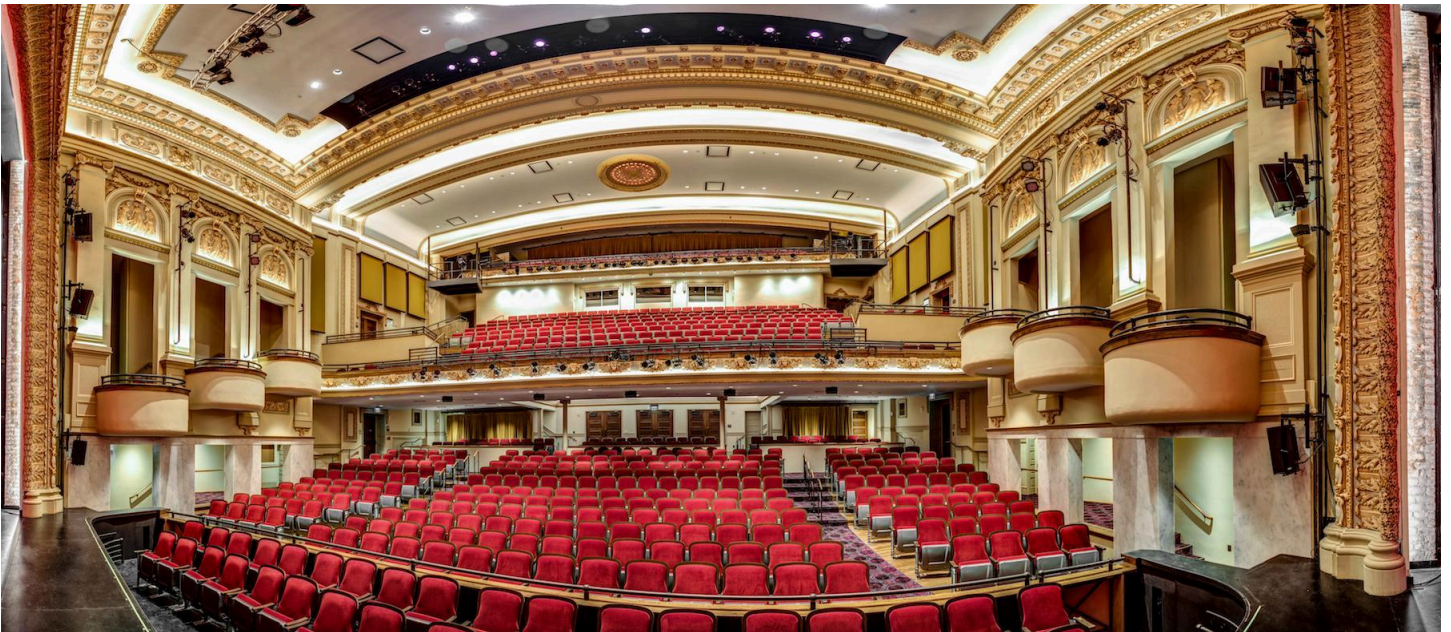
Email: [gmavinga@academycenter.org](mailto:gmavinga@academycenter.org)

Office: (434) 528-3256 x300



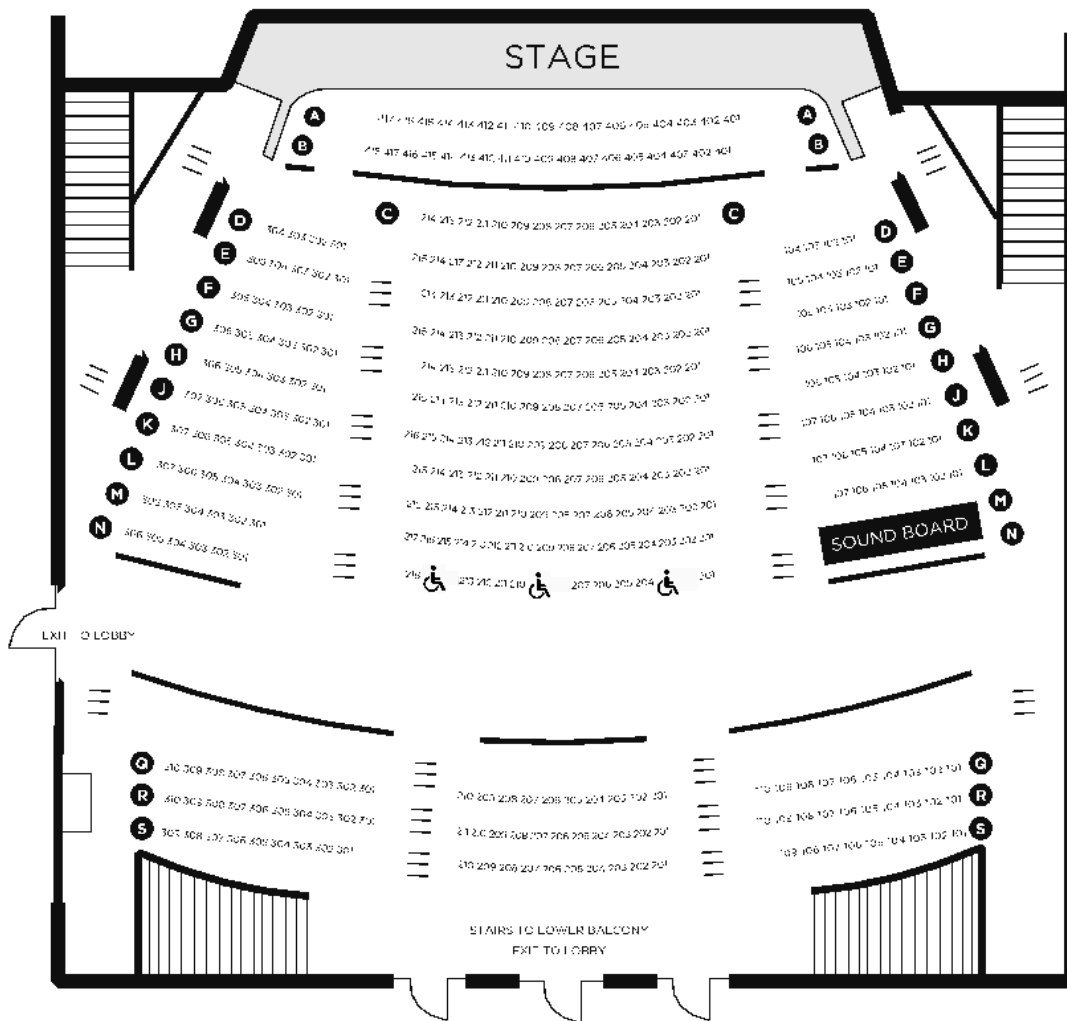
## SEATING CAPACITY

ORCHESTRA PIT	35
ORCHESTRA FRONT	284
ORCHESTRA REAR	89
ORCHESTRA LOOSE SEATS	9
BALCONY	252
BALCONY LOOSE SEATS	12
BALCONY SIDE BOXES	12
UPPER BALCONY	142
<b>TOTAL CAPACITY</b>	<b>835</b>

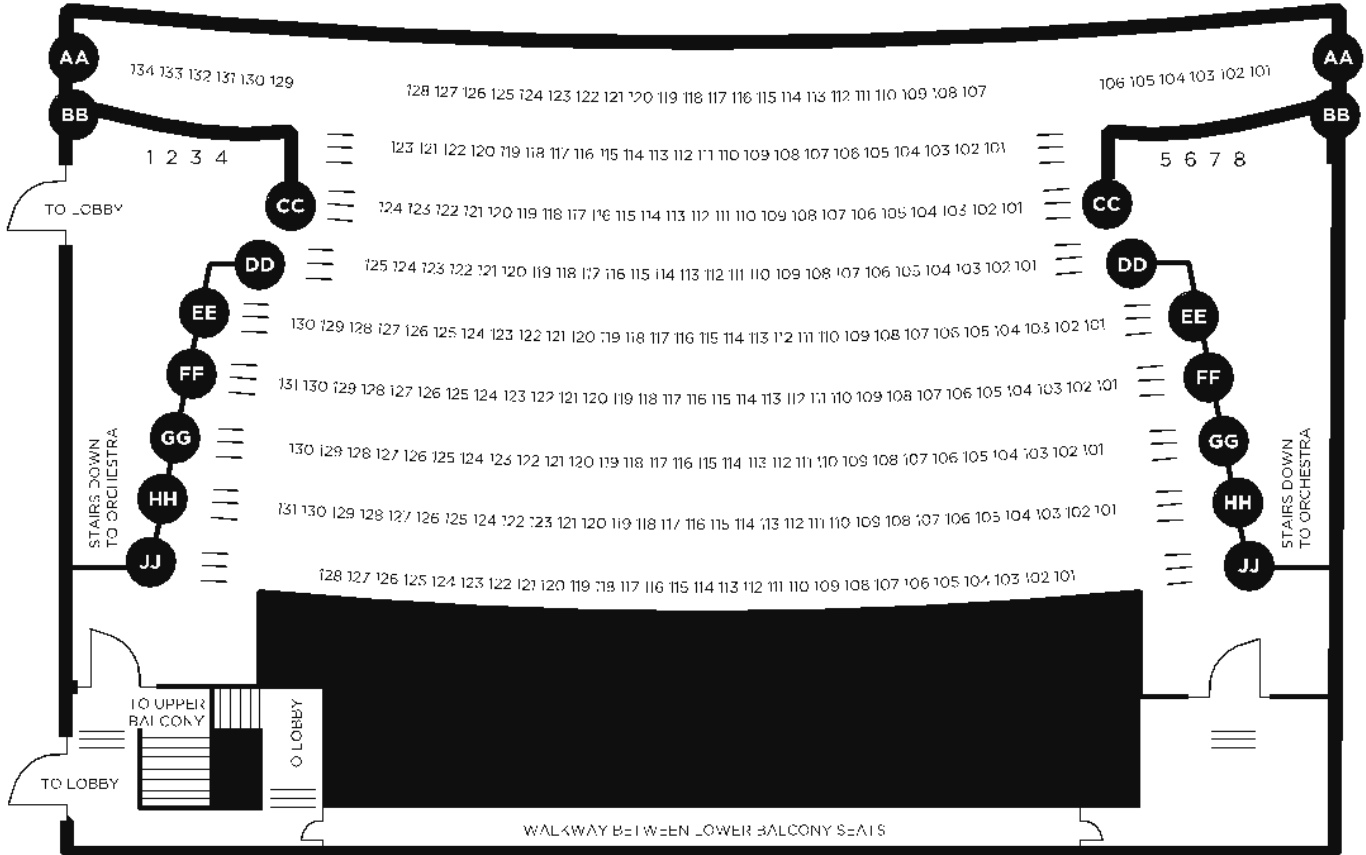


SEATING CHARTS

ORCHESTRA



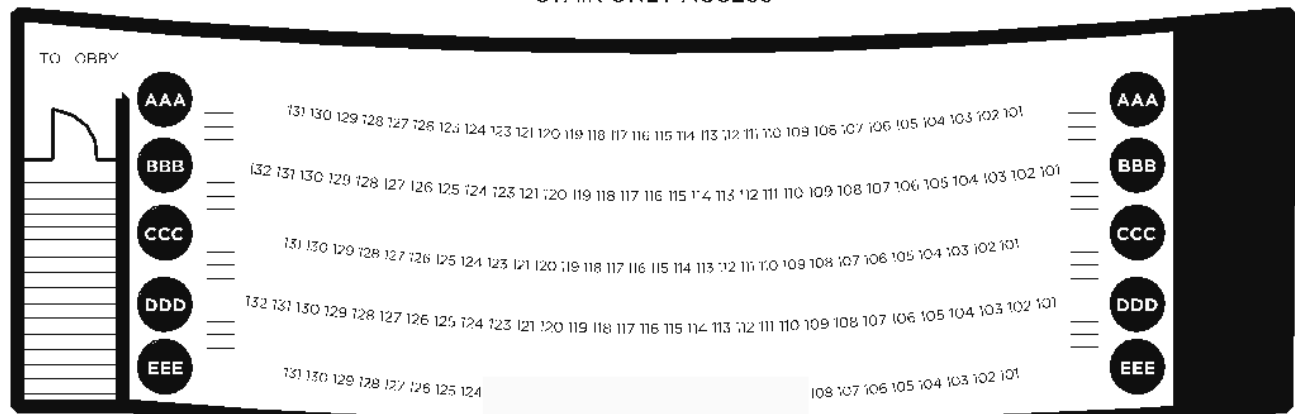
## LOWER BALCONY





## UPPER BALCONY

STAIR ONLY ACCESS







## LOADING DOCK AND PARKING

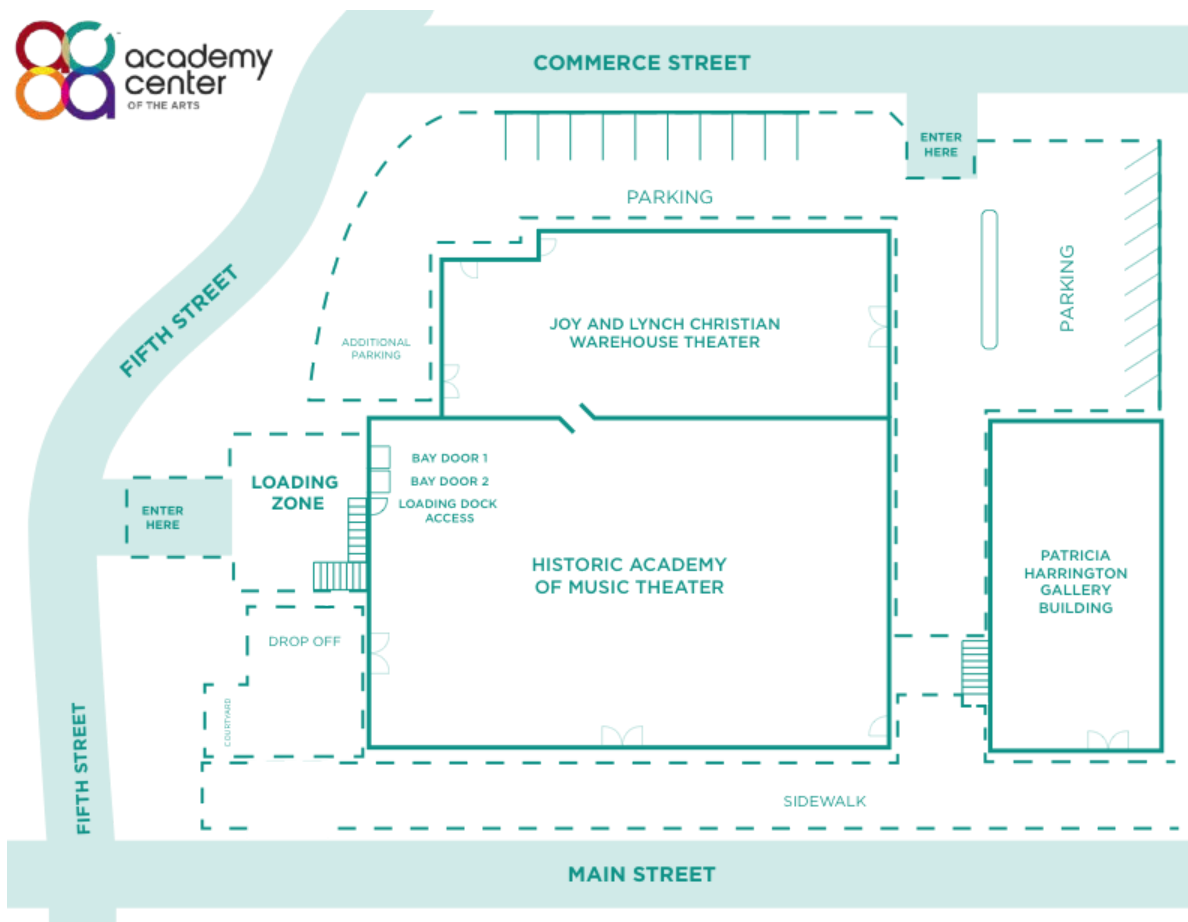
All load-ins will take place from the loading dock, located on the left side of the Historic Academy Theatre, off of Fifth Street.

The loading dock can accommodate two (2) vehicles at a time.

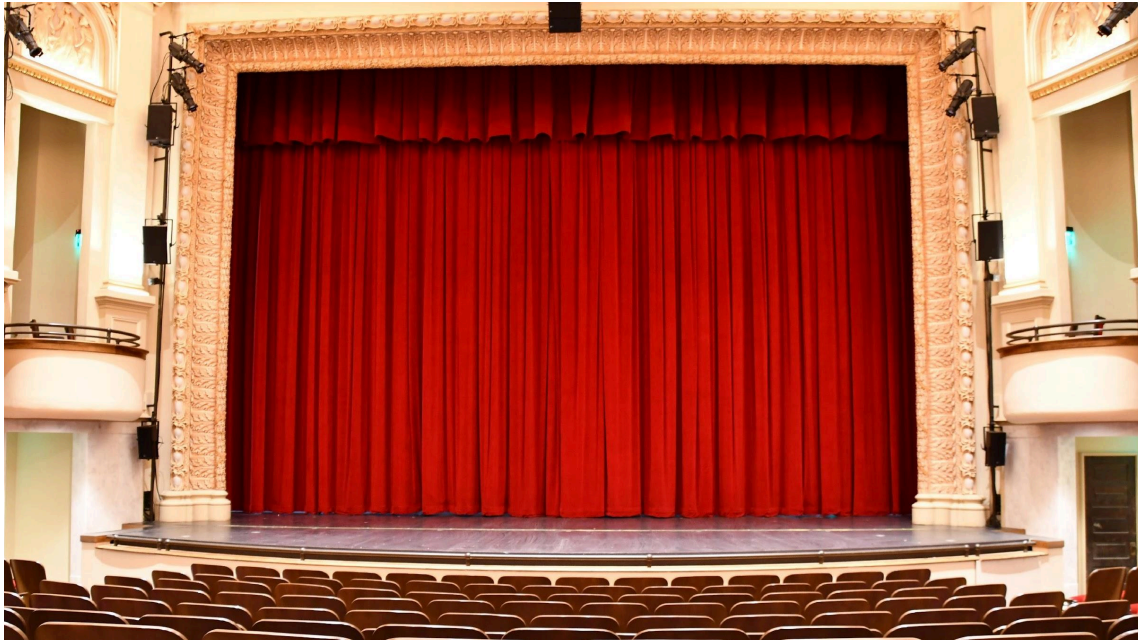
Two (2) roll up doors 7'6" wide x 9' high lead from loading dock, through a staging area, to one (1) 10' wide x 9' high double door onto the SR portion of the stage.

Total distance from truck to stage is approximately 15'.

Loading dock dimensions : 14'-4" x 30'-5.5"



## STAGE INFORMATION AND MEASUREMENTS



AREA	MEASUREMENT
STAGE SIZE	36' x 40'
PROSCENIUM OPENING	35'11W x 24'3"H
PLASTER TO US WALL	39'-6"
PLASTER TO LAST LINE SET	37'-10"
PLASTER TO APRON EDGE (without pit)	6'-8"
PLASTER TO APRON EDGE (with pit)	shortest: 11'-9" longest: 16"-0"
CL TO FLY RAIL (SL)	32'-10"
SL TO SR WALL	80'-7"
CL TO SR COLUMNS	33'-10"
CL TO SR WALL	51"-9"
GRID HEIGHT (DECK TO BOTTOM OF STEEL)	64'
MID RAIL HEIGHT (DECK TO BOTTOM OF STEEL)	29'-3"
BACKSTAGE CROSSOVER	65'L x 9'-5"W x 7'-8"H



Floor Construction: Sprung, black 1/4" Masonite surface over two (2) layers of 5/8" plywood on PermaFlex II sleepers with integral stop blocks (16" centers).

Orchestra Pit / Pit Lift: Gala Systems Pit Lift

Pit platform is 9'3" deep at center x 39'2" wide. When platform is at pit level, the orchestra pit is 20'5" deep at center x 36' wide.

Total travel distance from stage level to storage level is 18'11.5".

Counterweight Rigging: Rigging system consists of 45 single purchase counterweight line sets with 46' long battens with 3' extensions and line set capacity of 1200# each, unless otherwise noted. Max out trim is 62'-0".

Information on drapery and line sets can be found on the following page(s).



## DRAPERY INVENTORY

DESCRIPTION	WIDTH	HEIGHT	FULLNESS	FABRIC	QTY
GRAND DRAPE	24'-0"	27'-6"	100%	100% Cotton Velour, Lined	2 PANELS
MAIN VALENCE	46'-0"	12'-0"	100%	100% Cotton Velour, Lined	1 PANEL
BORDERS	46'-0"	12'-0"	0%	0% Cotton Velour	5 PANELS
LEGS	8'-0"	28'-0"	0%	0% Cotton Velour	12 PANELS
BLACK TRAVELERS	24'-0"	27'-6"	0%	0% Cotton Velour	4 PANELS
SCRIM	42'-0"	28'-0"	0%	Black Sharkstooth Scrim	1 PANEL
CYCLORAMA	42'-0"	28'-0"	0%	0 % White Leno Filled	1 PANEL



## REPERTORY LINE SET SCHEDULE

\*\*Please contact production to confirm soft good placement as these change very regularly

SET	DATUM PLASTER LINE	DESCRIPTION	OPERATION
FC	-1'-6"	FIRE CURTAIN	HOIST - CW ASSIST
1	6"	MAIN VALENCE	
2	1'-2"	MAIN DRAPE	BI-PART MANUAL DRAPE TRACK
3	1'-10"		
4	2'-6"		
5	3'-10"	1 <sup>ST</sup> ELECTRIC	TRUSS BATTEN
6	5'-2"	FRONT PROJECTION SCREEN	WHITE 35'-6"W 20'-6"H
7	5'-10"	1.5 ELECTRIC	BLACK 46'-0"W 12'-0"H
8	6'-6"	ORCHESTRA SHELL	TRUSS BATTEN, 3000# CAPACITY**
9	7'-10"	1 <sup>ST</sup> LEGS	BLACK 8'-0"W 28'-0"H
10	8'-6"		
11	9'-2"		
12	9'-10"	2 <sup>ND</sup> BORDER	BLACK 46'-0"W 12'-0"H
13	10'-6"		
14	11'-10"	2 <sup>ND</sup> ELECTRIC	
15	13'-2"		
16	13'-10"	2 <sup>ND</sup> LEGS	BLACK 8'-0"W 28'-0"H
17	14'-6"	3 <sup>RD</sup> BORDER	BLACK 46'-0"W 12'-0"H
18	15'-2"		
19	16'-6"	MID-STAGE TRAVELER	BI-PART MANUAL DRAPE TRACK
20	17'-10"	REAR PROJECTION SCREEN	
21	18'-6"	ORCHESTRA SHELL	TRUSS BATTEN, 3000# CAPACITY**
22	19'-10"	3 <sup>RD</sup> ELECTRIC	
23	20'-6"	3 <sup>RD</sup> LEGS	BLACK 8'-0"W 28'-0"H
24	21'-2"		
25	21'-10"		
26	22'-6"		
27	23'-2"		
28	23'-10"	4 <sup>TH</sup> BORDER	BLACK 46'-0"W 12'-0"H
29	24'-6"	4 <sup>TH</sup> LEGS	BLACK 8'-0"W 28'-0"H
30	25'-10"	4 <sup>TH</sup> ELECTRIC	BLACK 8'-0"W 28'-0"H
31	26'-6"		
32	27'-2"		
33	27'-10"	5 <sup>TH</sup> BORDER	BLACK 46'-0"W 12'-0"H
34	28'-6"	5 <sup>TH</sup> LEGS	BLACK 8'-0"W 28'-0"H
35	29'-2"	SCRIM	BLACK 42'-0"W 28'-0"H
36	29'-10"	5 <sup>TH</sup> ELECTRIC	
37	30'-6"		TRUSS BATTEN, 3000# CAPACITY**
38	31'-10"		



39	32'-6"	CYC	WHITE FILLED LENO 42'W 28'-0"H
40	33'-10"	UPSTAGE TRAVELER	BI-PART MANUAL DRAPE TRACK
41	35'-2"		
42	35'-10"		
43	36'-6"	NOT USABLE	
44	37'-2"	NOT USABLE	
45	37'-10"	NOT USABLE	

**\*\*Truss battens reach ~12' above the deck at their lowest point.**



## POWER

Five (5) Company Switches are available around the perimeter of the stage to accommodate dimming and power distribution devices for touring applications. Each Company Switch has a connection chamber with shunt-trip access door and utilizes cam-lock type connectors made up of A phase, B Phase, C Phase, Neutral, Neutral, and Reverse Ground.

Power specifications are listed below.

COMPANY SWITCH	LOCATION	NOTES
400A	USR	
400A	USR	
100A	DSR	
200A	DSL	ISOLATED GROUND



## ELECTRICS + LIGHTING/EFFECTS SYSTEM

**\*\*Contact house LD to discuss full inventory and current hang.**

**Please be advised that a fire marshal approval request of any and all haze/fog/etc. effects must be submitted no later than 14 days prior to the first day the effect will run. This includes events for, but is not limited to, touring productions, local productions, and touring bands. Failure to address this may result in having effects removed from performance.**

### Installed Performance Power and Controls:

The Performance Power and Controls system consists of two (2) Lyntec RPC DMX-Controlled Relay panels that are hard-wired to various locations in the theatre.

Circuit distribution is a mix of various busway connections and switched single circuit 20A Stagepin connectors on outlet boxes and connector strips. The Busways on SL and SR galleries are controlled by Crestron panels that are used to power stage electrics and house booms. The Crestron panels also control power to the stage pin connectors located on the stage level.

The control system is a network-based system, utilizing ETC Net3/ACN, RDM, and DMX. Portable DMX Gateways may be plugged into any available lighting network port location, allowing conversion of ACN to DMX. The network is capable of powering IEEE 802.3 standard compliant "Power Over Ethernet" Devices (P.O.E.)

### Performance Lighting Control:

- Console
  - grandMA3 on PC with command wing
- DMX/Data Devices
  - 2-Port Net3/CAN/RDM/DMX Portable Gateways

### Performance Lighting Fixtures – (Refer to Rep Plot):

- ETC Source 4 LED Lustr+ Series 2 Body
  - 10° Source 4 Barrel
  - 14° Source 4 Barrel EDLT
  - 19° Source 4 Barrel EDLT
  - 26° Source 4 Barrel EDLT





- 36° Source 4 Barrel EDLT
- 50° Source 4 Barrel EDLT
- ETC D-60 Lustr+
  - D60 Narrow Lens 27°
  - D60 Medium Lens 42°
- Chroma Q Color Force II 72" Cyc strip
- High End Solaframe 2000
- R2X Wash

Performance Lighting Fixtures Continued – (Refer to Rep Plot):

- (2) Robert Juliat Topaze 1200w MSD Followspots

Performance Lighting Accessories:

- Altman 18" Single T Sidearm
- 10° Source 4 Top Hat
- 7.5" Source 4 Top Hat
- 6.25" Source 4 Top Hat

Atmospheric Effects:

- (1) Real FX DF50 DMX Hazer

Additional Inventory:

- Marley Dance floor
  - (7) 63"x46'
  - (1) 63"x36'



## SOUND AND COMMUNICATION SYSTEM

**\*\*Contact house Production to discuss full inventory.**

### Sound Power:

There is isolated ground sound power throughout the facility, including the one (1) company switched noted above. IG convenience outlets are orange and marked with a triangle. Equipment tying into the house sound system must get power from these outlets to avoid a ground loop.

### Mix Position:

House mix position is located in the orchestra level on HR, just in front of the cross aisle.

### Consoles and Snakes:

Yamaha CL5 and portable Rio1608-D stage boxes. The mixer digitally feeds signal to the DSP.

Touring consoles may be plugged into house PA at orchestra level mix position and downstage left.

### DSP:

The house DSP takes main speaker feeds and relay feeds, process them and feeds them to house speaker positions, including fill and delay speakers. This signal may also be routed to the relay system and the ALS system.

### Amplifiers:

The house system uses Meyer MPS-488HP to power Meyer cabinets that are not self-powered. The cinema system is powered with Lab Gruppen amplifiers.

### Speakers:

- House System
  - Center line array: (8) Meyer MINA speakers and (4) Meyer 500-HP subwoofers
  - House Side fills (Left and Right): (4) Meyer UPA-1P
  - Box fills: (2) Meyer MM-4XP
  - Near fills: (2) Meyer UPJunior-XP
  - Balcony delays: (5) Meyer UP-4XP
  - Upper Balcony delays: (5) Meyer UP-4XP
- Monitor Speakers
  - d&b MAX2 two way wedge monitors



#### Audio Sources and Microphones:

- Sources
  - Polymedia Player: Denon DN-300Z
  - Solid State Recorder: Denon DN-700R
- Microphones
  - Shure ULXD wireless

#### House Backline:

- (1) 9' Steinway Model D Grand Piano
  - \$125 Tuning Fee for use

#### Intercom System / Stage Manager's System:

The intercom system is a wired 4 channel digital party line system.

- HXII-BP beltpacks
- CC-400-X4 Double ear headsets
- CC-300-X4 Single ear headsets

#### Assisted Listening System:

Williams LT-800 FM System with (30) headset receivers and (8) induction loop receivers. This system is equalized and compressed in the DSP and fed the same source as backstage relay signal.

#### Backstage Relay and Paging:

The backstage relay signal may be fed from a dedicated signal from the house console, a dedicated feed from a touring console, from the Left, center and right channels feeding the main speakers or from dedicated monitor microphones.

This signal is fed via 70v distribution to dressing rooms, backstage areas, the lobby and the control booth.

The stage manager may individually select and page the house, backstage or the lobby via their intercom headset. This page overrides the volume controls in the dressing rooms.



## VIDEO AND PROJECTION SYSTEM

### Video Cameras:

- Sony SRG-300H PTZ Camera

### Projector:

- Christie HD20K-J, 20,000 lumen 1080p
- Christie WU25 20,000 lumen 1080p for rear projection

### Video Sources:

- Denon DN-500BD
  - Will play virtually every Blu-ray, DVD, and audio CD format, Using the built-in LAN port, users may optionally access additional content via BD Live. For even more versatility, a front-loading USB slot delivers access to MP3, WAV, FLAC, MP4, WMV, JPG, PNG, GIF files, and more

### Screen:

- MDI 18' x 33'8" flown frame with Northview 1.0 Gain MicroPerf Screen
- Rosco Grey rear projection screen 24'x34' flown frame

### Lobby Screens:

- (2) NEC Screens
  - Video is distributed to screens in the lobby for coming attractions and show relay



## SUPPORT SPACES

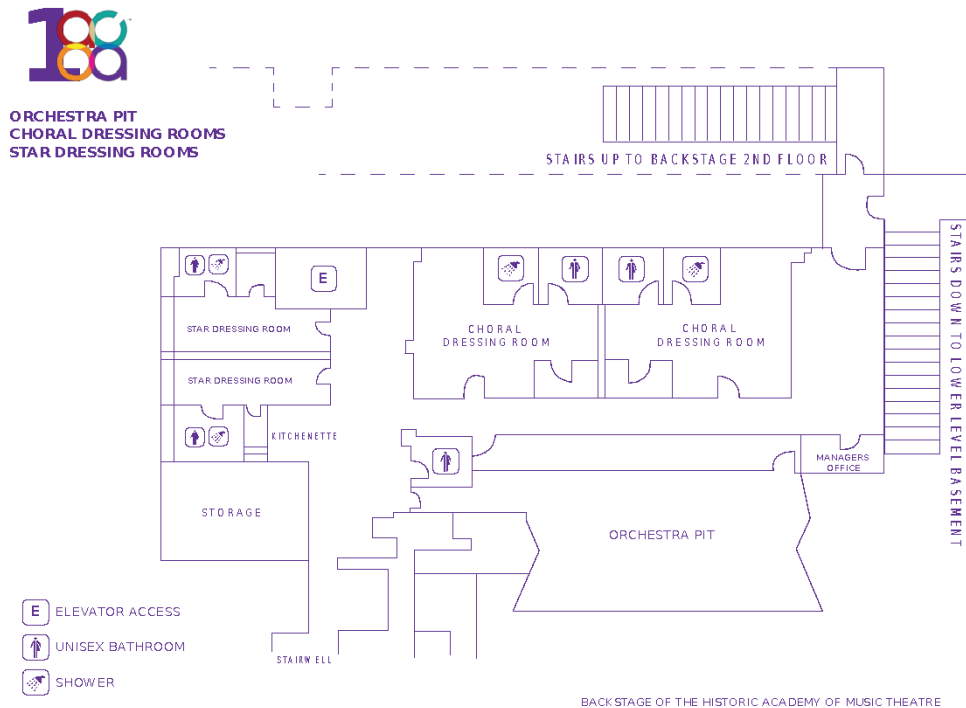
All support spaces are located below stage level.

### Dressing Rooms:

**STAR DRESSING ROOMS (2):** Located below stage level. Complete with mirrors, lights, toilet, sink, shower, one (1) lounge chair. Each star dressing room accommodates two (2) performers.

**CHORAL DRESSING ROOMS (2):** Located below stage level. Complete with mirrors, chairs, lights, three (3) sinks, one (1) toilet, and one (1) shower. These rooms' capacity varies in range from 10 – 15 performers.

**KITCHENETTE (1):** Located below stage level to the left of the star dressing rooms. Complete with one (1) small refrigerator, one (1) microwave, one (1) coffee machine, and a sink. One (1) small café dining table and two (2) chairs are located in close proximity.





Multi-purpose Room:

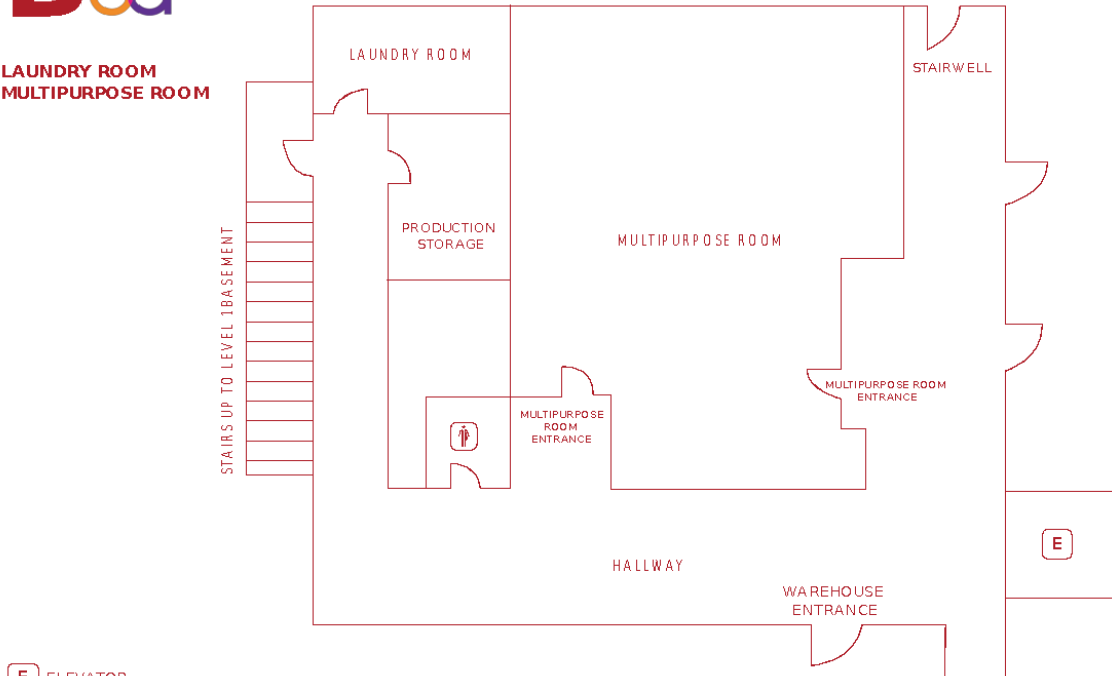
**MULTI-PURPOSE ROOM (1):** Located below stage level. Complete with chairs, tables, and lights. The Multi-Purpose Room can accommodate up to 50 performers.

Laundry Room:

**LAUNDRY ROOM (1):** One (1) 220sf wardrobe/laundry room with two (2) washers and dryers, and two (2) laundry sinks.



LAUNDRY ROOM  
MULTIPURPOSE ROOM



**E** ELEVATOR  
 UNISEX BATHROOM

BACK STAGE OF THE HISTORIC ACADEMY OF MUSIC THEATRE



## LOCAL FACT SHEET

### TRANSPORTATION:

Uber and Lyft serve the City of Lynchburg

Allied Cab  
434-845-7039

Enterprise Rent-a-Car  
2415 Wards Road  
434-237-5656

### HEALTH SERVICES:

Centra Lynchburg General Hospital  
1901 Tate Springs Road  
434-200-3000

Virginia Baptist Hospital  
3300 Rivermont Avenue  
434-200-4000

### SAFETY SERVICES:

Lynchburg Police Department  
905 Court Street  
434-455-6050

Lynchburg Fire Department  
800 Madison Street  
434-455-6340

### PHARMACY:

Hill City Pharmacy



800 Fifth Street  
434-845-2222  
Hours:  
M-Sun 10:00am-8:00pm

CVS  
4028 Wards Road  
434-239-7092  
Hours:  
M-F 9:00am-9:00pm  
Sat-Sun 9:00am-6:00pm

Walgreens  
2004 Wards Road  
434-832-0935  
Pharmacy Hours:  
M-F 9:00am-9:00pm  
Sat-Sun 9:00am-9:00pm

#### GROCERY:

Kroger  
4119 Boonsboro Road  
434-384-2415  
Hours:  
M-Sun. 6:00am-12:00am

Food Lion  
4925 Boonsboro Road  
434-384-0179  
Hours:  
M-Sun 7:00am-11:00pm

Walmart  
3900 Wards Road  
434-832-0304  
Open 24 hours

The Fresh Market  
3901 Old Forest Road Building A  
434-385-4202





Hours:  
M-Sun 8:00am-9:00pm

Aldi  
2617 Lakeside Drive  
704-727-2755

Hours:  
M-Sun 9:00am-8:00pm

**LODGING:**

Lynchburg Grand Hotel  
601 Main Street  
(across the street from the venue)  
434-528-2500  
Check In: 3:00pm  
Check Out 12:00pm

The Virginian Hotel  
712 Church Street  
434-329-3200  
Check In: 4:00pm  
Check Out 11:00am

The Craddock Terry Hotel  
1312 Commerce Street  
434-455-1500  
Check In: 4:00pm  
Check Out 12:00pm

**AMERICAN:**

Market at Main



Breakfast, burgers, salads, sandwiches, seafood, soups  
904 Main Street  
434-847-9040

Depot Grille  
Bar, steaks, seafood, sandwiches, salads, appetizers  
10 Ninth Street  
434-846-4464

Jimmy's on the James  
American fine dining  
610 Commerce Street  
434-845-1116

RA Bistro  
Bar, American cuisine including burgers and sandwiches, seafood, salads  
1344 Main Street  
434-845-1601

Bootleggers  
Bar, specialty burgers, appetizers, and salads  
50 13th Street  
434-333-4273

#### ASIAN:

Aji Ramen and Sushi  
Ramen and Sushi  
908 Main Street  
434-845-2816

#### BBQ:

Fifth and Federal  
Whiskey/beer bar, BBQ and southern style cuisine  
801 Fifth Street  
434-386-8113

#### BRUNCH:

My Dog Dukes



Breakfast, soups, salads, sandwiches, seafood  
1007 Commerce Street  
434-849-8868

Market at Main  
Breakfast, burgers, salads, sandwiches, seafood, soups  
904 Main Street  
434-847-9040

**BREWERIES:**

3 Roads Brewing Company  
Brewery  
1300 Court Street  
434-386-8153

Reserve Tasting Room & Lounge  
Brewery  
1101 Jefferson Street  
434-316-2752

Starr Hill on Main  
Brewery  
1300 Main Street  
434-219-6441

**CLEAN EATING:**

Crisp  
Salad and juice bar  
1124 Church Street  
434-386-8998

**COFFEE AND PASTRIES:**

Cinn City Gourmet Buns & Beignets  
1344 Main Street  
434-215-3957

Dublin 3 Coffeehouse  
1001 Jefferson Street  
434-439-4683



Mama Crockett's Cider Donuts  
500 Fifth Street  
434-215-3275

Marigold at The Virginian Hotel  
712 Church Street  
434-616-4424

Mission House Coffee  
722 Commerce Street  
434-329-7462

White Hart Cafe  
1208 Main Street  
434-207-5600

#### MEDITERRANEAN:

Hot and Cold Cafe  
Mediterranean/Indian cuisine, soups, salads  
1206 Main Street  
434-846-4976

#### MEXICAN:

El Jefe  
Tequila and taco bar  
1214 Commerce Street  
434-333-4317

#### PIZZA:

Waterstone Pizza



Bar, pastas, salads, sandwiches, pizza  
1309 Jefferson Street  
434-455-1515

Benny Scarpetta's  
Pizza  
1019 Main Street  
434-528-5111

**ROOFTOP VIEWS:**

Skyline  
Bar, steak, chicken, tapas platters, artisan flatbreads  
712 Church Street  
434-616-4425

**SEAFOOD:**

The Water Dog  
Bar, burgers, raw oysters, seafood, and appetizers  
1016 Jefferson Street  
434-333-4681

**STEAKHOUSE:**

William & Henry Steakhouse  
Bar, steak, seafood  
712 Church Street  
434-616-4423  
\*Open Thursday to Saturday from 5-10PM